



Victoria

2 Key High Grade Gold Projects

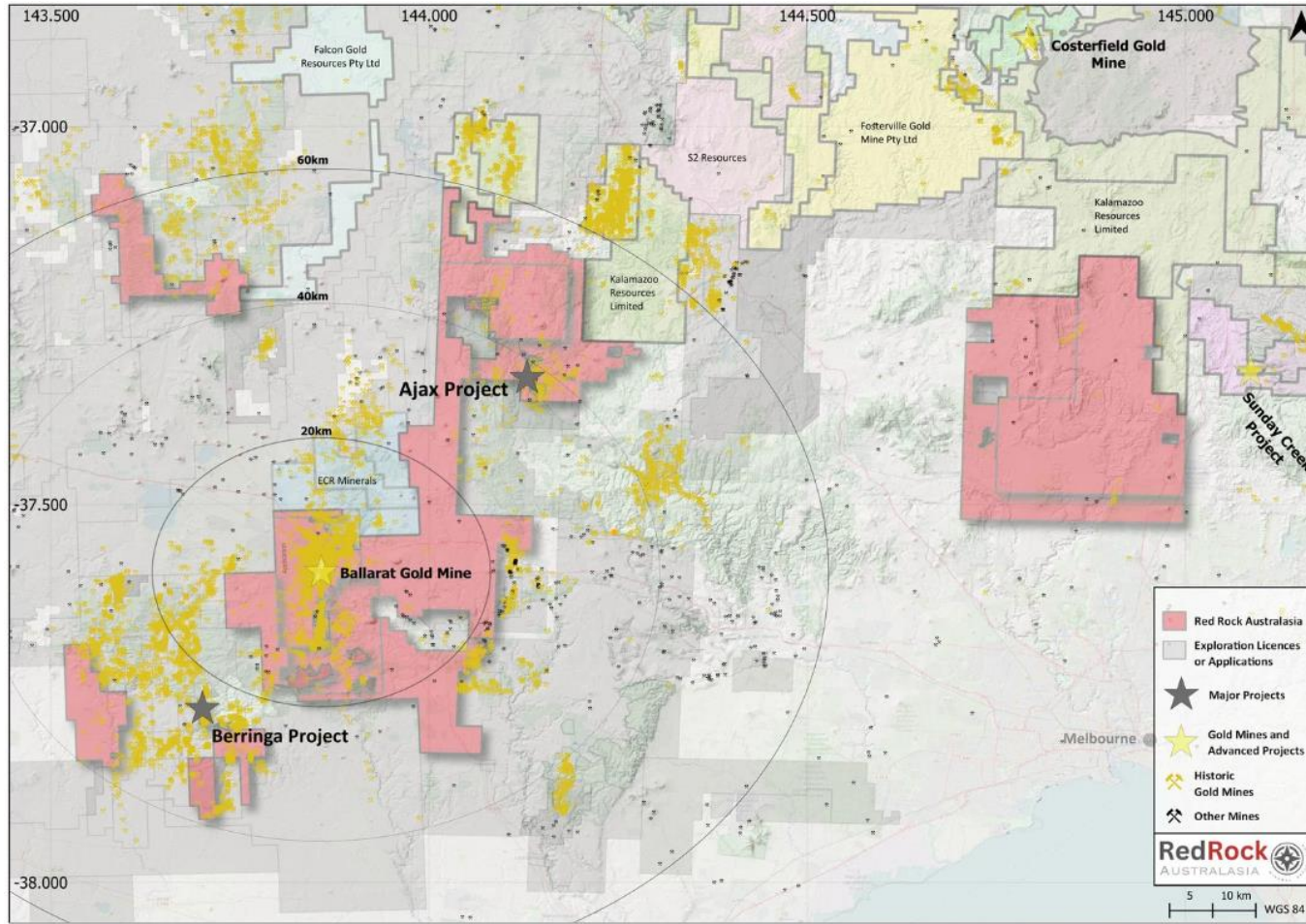
- Up to 2.1m oz targeted from known mineralised areas
- Preferred target of 843k oz at 9.3 g/t

Disclaimer

This document contains “forward-looking information” which may include, but is not limited to, statements with respect to the future financial or operating performances of Red Rock Australasia Pty Ltd, (“RRAL”) its subsidiaries and its projects, the future price of gold, or other commodities, the estimation of mineral reserves and resources, costs and timing of future exploration, requirements for additional capital, government regulation of mining operations, environmental risks, reclamation and rehabilitation expenses, title disputes or claims, limitations of insurance coverage and the timing and possible outcome of any future litigation and regulatory matters. Often, but not always, forward-looking information statements can be identified by the use of words such as “plans”, “expects”, “is expected”, “budget”, “scheduled”, “estimates”, “forecasts”, “intends”, “anticipates”, or “believes”, or variations (including negative variations) of such words and phrases, or state that certain actions, events or results “may”, “could”, “would”, “might”, or “will” be taken, occur or be achieved. Forward-looking statements involve known and unknown risks, uncertainties and other factors which may cause the actual results, performance or achievements of RRAL and/or its subsidiaries to be materially different from any future results, performance or achievements expressed or implied by the forward-looking statements. Although RRAL has attempted to identify important factors that could cause actual actions, events or results to differ materially from those described in forward-looking statements, there may be other factors that cause actions, events or results to differ from those anticipated, estimated or intended. Forward-looking statements contained herein are made as of the date of this document based on the opinions and estimates of management, and RRAL disclaims any obligation to update any forward-looking statements, whether as a result of new information, estimates or opinions, future events or results or otherwise. There can be no assurance that forward-looking statements will prove to be accurate, as actual results and future events could differ materially from those anticipated in such statements. Accordingly, readers should not place undue reliance on forward-looking statements.

The information in this report that relates to Exploration Targets, Exploration Results, Mineral Resources, or Ore Reserves is based on information compiled by Mr Tarrant Meehan. Mr. Meehan is a full-time employee of the Company and is considered to have sufficient experience that is relevant to the style of mineralisation and type of deposit under consideration and to the activity being undertaken to qualify as a Competent Person as defined in the 2012 Edition of the ‘Australasian Code for Reporting of Exploration Results, Mineral Resources and Ore Reserves’.

Victorian Tenement Package



- ◆ Word Class Goldfields
- ◆ 2281sq kms of tenements
- ◆ 5th largest public holding in Victoria
- ◆ 2 Advanced projects
- ◆ Drill Ready

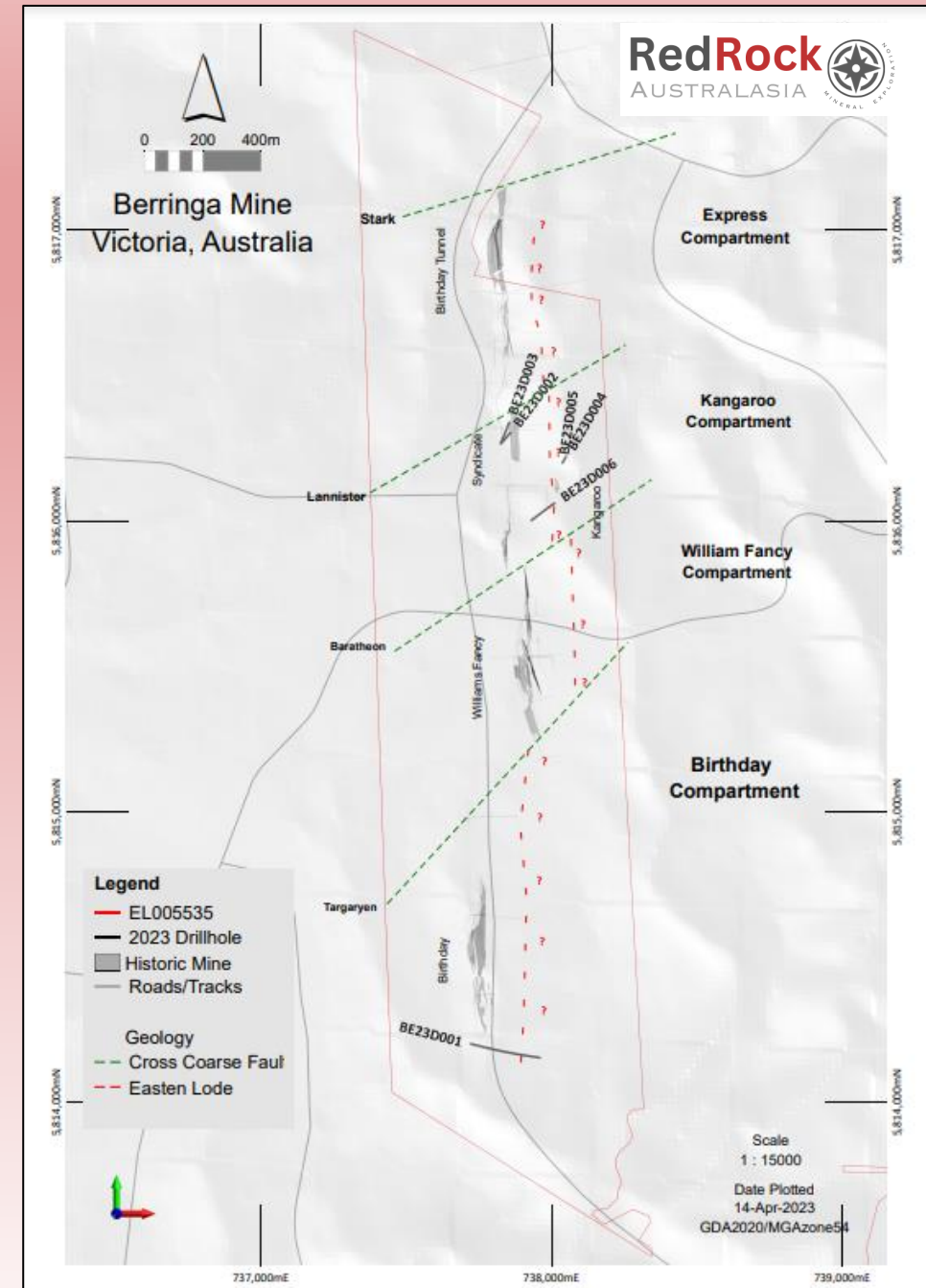
After 2 years of holding; 50 percent of tenement area will be surrendered

Berringa

Historic Production: 930,000 tones @ 9.8 g/t for 293,000 oz



- Last mined in the 1980s
- Significant historical relevance to the Victorian Goldfields
- Saddle reef style mineralisation similar to Bendigo and easier to mine
- Remnant mineralisation begins at 150m
- Accessible from Historic intact Adit
- Streamline Strategy to bring to Production



Gold Miner within Berringa Mine circa 1980s

2023 Exploration targeting completed and supported by 2023 drilling.

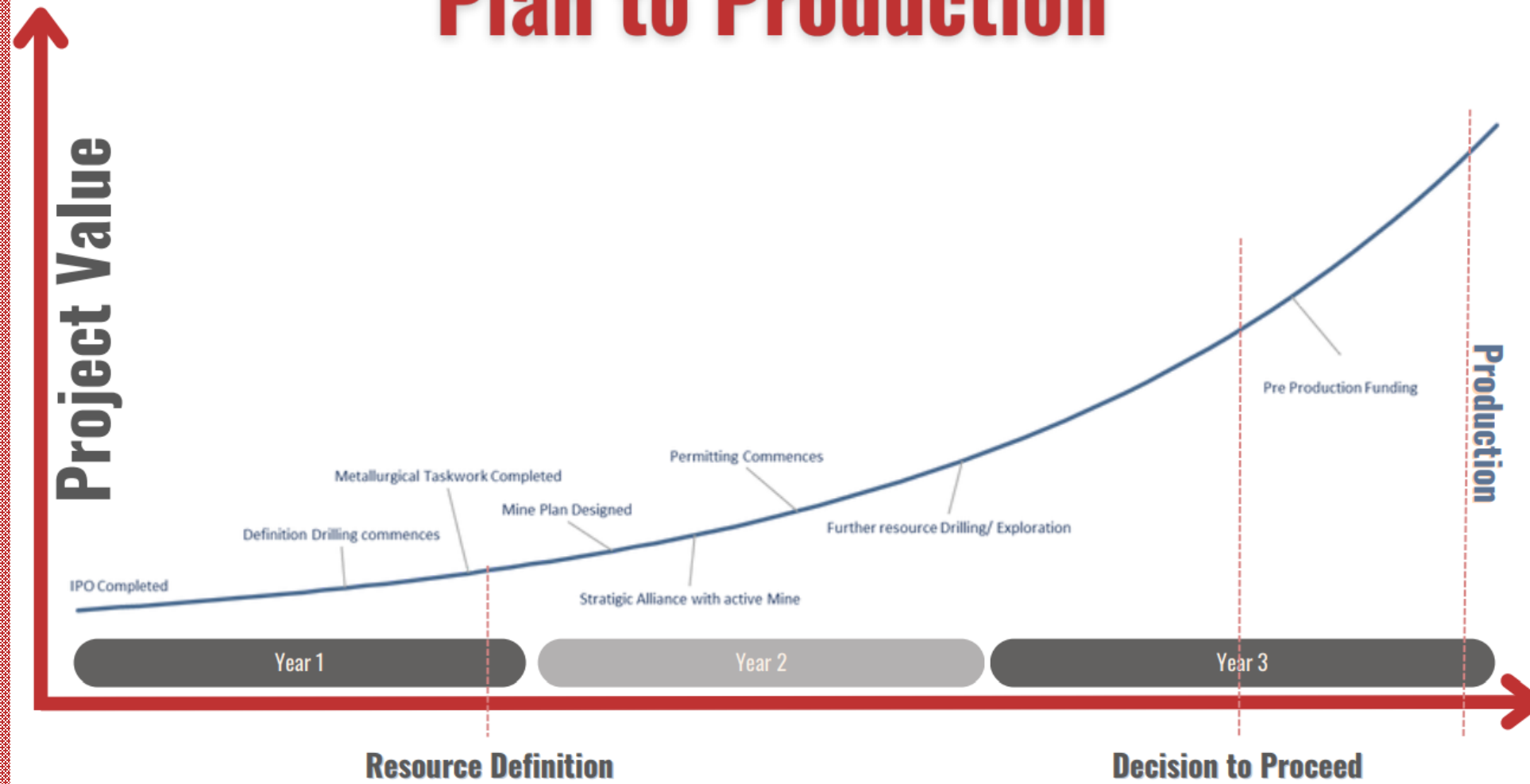
| Area | Target Name | Confidence | Tonne Range | Grade Range | Ounce Range |
|----------|----------------------|------------|------------------|------------------|-------------------|
| Birthday | Bara Minor Collie | High | 165kt - 2,750kt | 5.8g/t - 14.2g/t | 31koz - 126koz |
| | Callie Collie | Low | 76kt - 3,776kt | | 14koz - 172koz |
| | Bara Retriever | Medium | 28kt - 699kt | | 5koz - 32koz |
| Kangaroo | Bara Kelpie Upper | High | 15kt - 251kt | | 3koz - 11koz |
| | Callie Collie FW | High | 28kt - 462kt | | 5koz - 21koz |
| | Callie Collie HW | High | 121kt - 2,020kt | | 23koz - 92koz |
| | Bara Minor Retriever | Low | 22kt - 1,105kt | | 4koz - 50koz |
| | Bara Collie | Medium | 58kt - 1,444kt | | 11koz - 66koz |
| Tunnel | Bara Kelpie Lower | Medium | 111kt - 2,766kt | | 21koz - 126koz |
| | Bara Kelpie | High | 13kt - 222kt | | 2koz - 10koz |
| | Bara Collie | Low | 60kt - 3,015kt | | 11koz - 138koz |
| | Callie Collie | Low | 36kt - 1,819kt | | 7koz - 83koz |
| | Bara Minor Retriever | Medium | 68kt - 1,693kt | | 13koz - 77koz |
| William | Bara Collie | Low | 22kt - 1,109kt | | 4koz - 51koz |
| | Bara Minor Retriever | Low | 57kt - 2,831kt | | 11koz - 129koz |
| | Callie Collie | Low | 39kt - 1,967kt | | 7koz - 90koz |
| Total | | | 919kt - 27,931kt | 5.8g/t - 14.2g/t | 171koz - 1,275koz |

*An Exploration Target is a statement or estimate of the exploration potential of a mineral deposit in a defined geological setting where the statement or estimate, quoted as a range of tonnes and a range of grade (or quality), relates to mineralisation for which there has been insufficient exploration to estimate a Mineral Resource. It is uncertain if further exploration will result in the estimation of a mineral resource.

Preferred Exploration Target: 2.23 Mt @ 8.3 g/t for 596 koz

- Very little previous exploration work prior to RRAL taking on project in 2022
- **Six holes** drilled by RRAL in 2023
 - **4 holes with visible Au**
 - 0.25 m @ 34.8 g/t
 - 0.25 m @ 8.74 g/t
- 2023 Exploration target restricted to first 600m
- Further scope for deeper targeting
- Estimated **under 2000m further drilling** (or, possible access via Adit to L2) will bring project to a resource stage
- Potential for rehab of old levels for easier extraction
- Extracted ore could be concentrated and trucked to nearby gold processing site.

Berringa Strategic Plan to Production

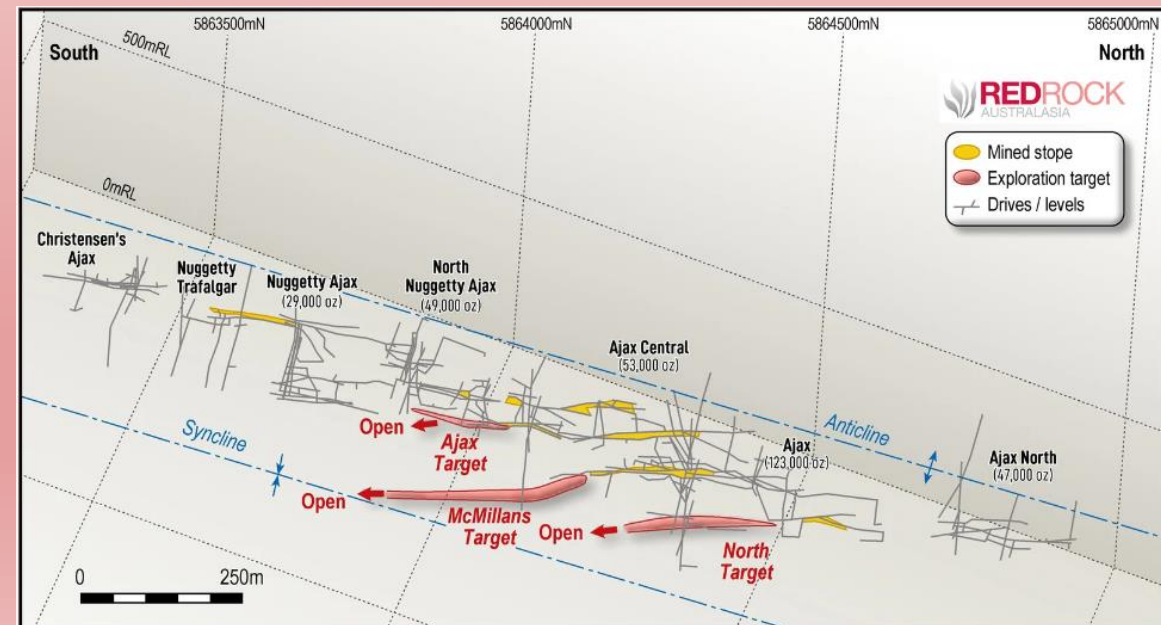
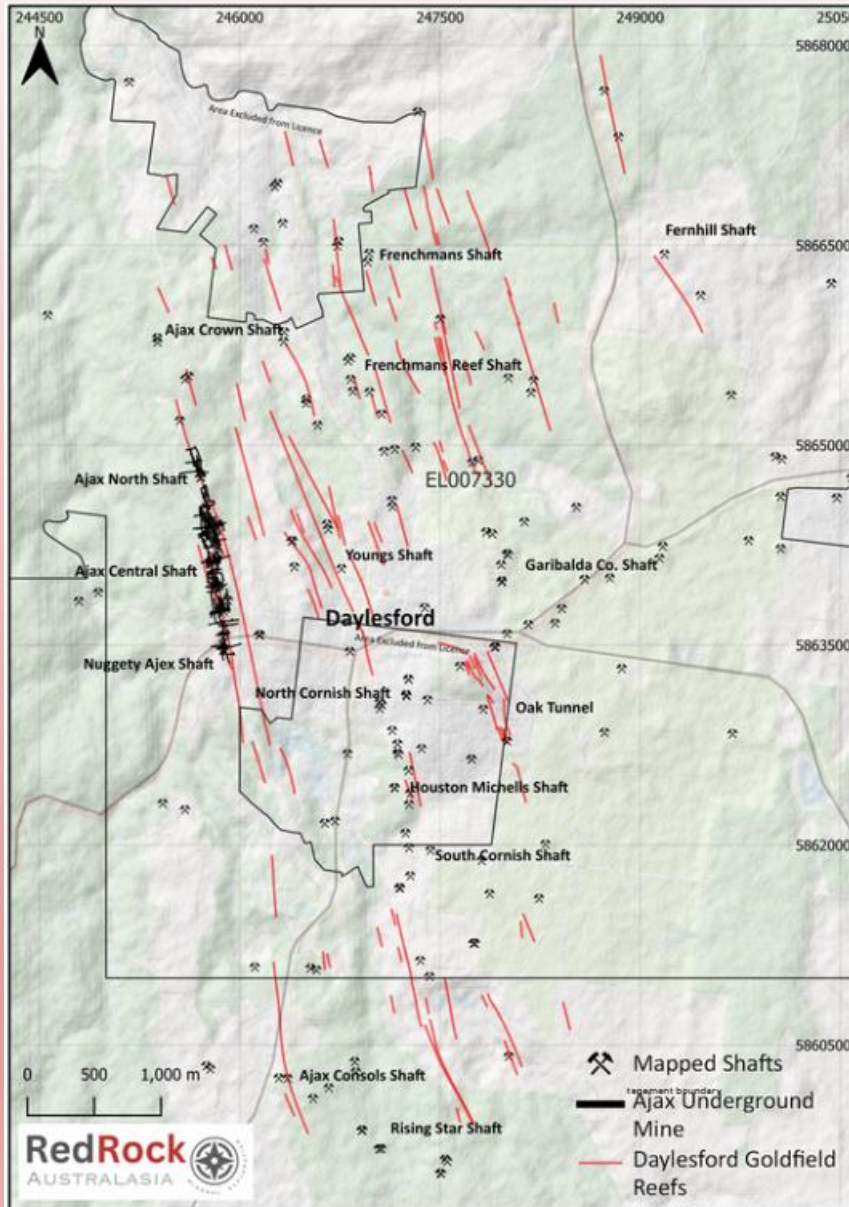


3 year streamlined process bringing historic mine into production

Second Near Term Opportunity

Ajax

- Located outskirts of rich Goldfields town Daylesford
- Predominately crown land in Aussie Bush rather than township
- Ajax line not mined since the 1920s
- Ajax line historic production 650 kt @ 14.8g/t for 310 koz
- Huge potential below old workings (historic max depth 300m)



Ajax Exploration Target Table

| Target | plunge Extent | width extent | Range | Thickness | Tonnes | Grade | Ounces |
|-----------|---------------|--------------|-------|-----------|---------|-------|---------|
| McMillans | 600 | 150 | lower | 0.9 | 216,270 | 6.4 | 44,500 |
| | | | avg | 2 | 480,600 | 13.7 | 211,682 |
| | | | upper | 3.7 | 889,110 | 21 | 600,281 |
| Ajax | 175 | 100 | lower | 0.3 | 14,018 | 6.4 | 2,884 |
| | | | avg | 1 | 46,725 | 12.2 | 18,327 |
| | | | upper | 6.1 | 285,023 | 18 | 164,942 |
| North | 300 | 100 | lower | 0.3 | 24,030 | 6.4 | 4,944 |
| | | | avg | 0.75 | 60,075 | 8.7 | 16,803 |
| | | | upper | 3.1 | 248,310 | 11 | 87,815 |

Weighted Average Totals

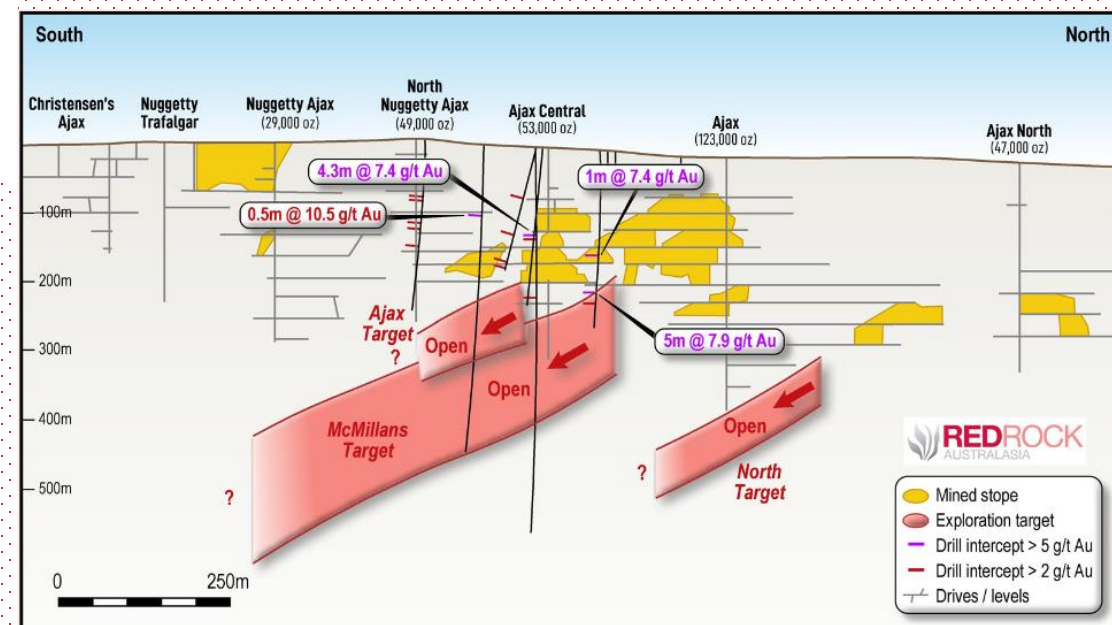
| Range | Thickness | Tonnes | Grade | Ounces |
|-------|-----------|-----------|-------|---------|
| lower | 0.8 | 254,318 | 6.4 | 52,328 |
| avg | 1.8 | 587,400 | 13.1 | 246,812 |
| upper | 2.8 | 1,422,443 | 18.7 | 853,037 |

*An Exploration Target is a statement or estimate of the exploration potential of a mineral deposit in a defined geological setting where the statement or estimate, quoted as a range of tonnes and a range of grade (or quality), relates to mineralization for which there has been insufficient exploration to estimate a Mineral Resource. It is uncertain if further exploration will result in the estimation of a mineral resource.

Preferred exploration target: 587 kt @ 13.1 g/t for 247 koz

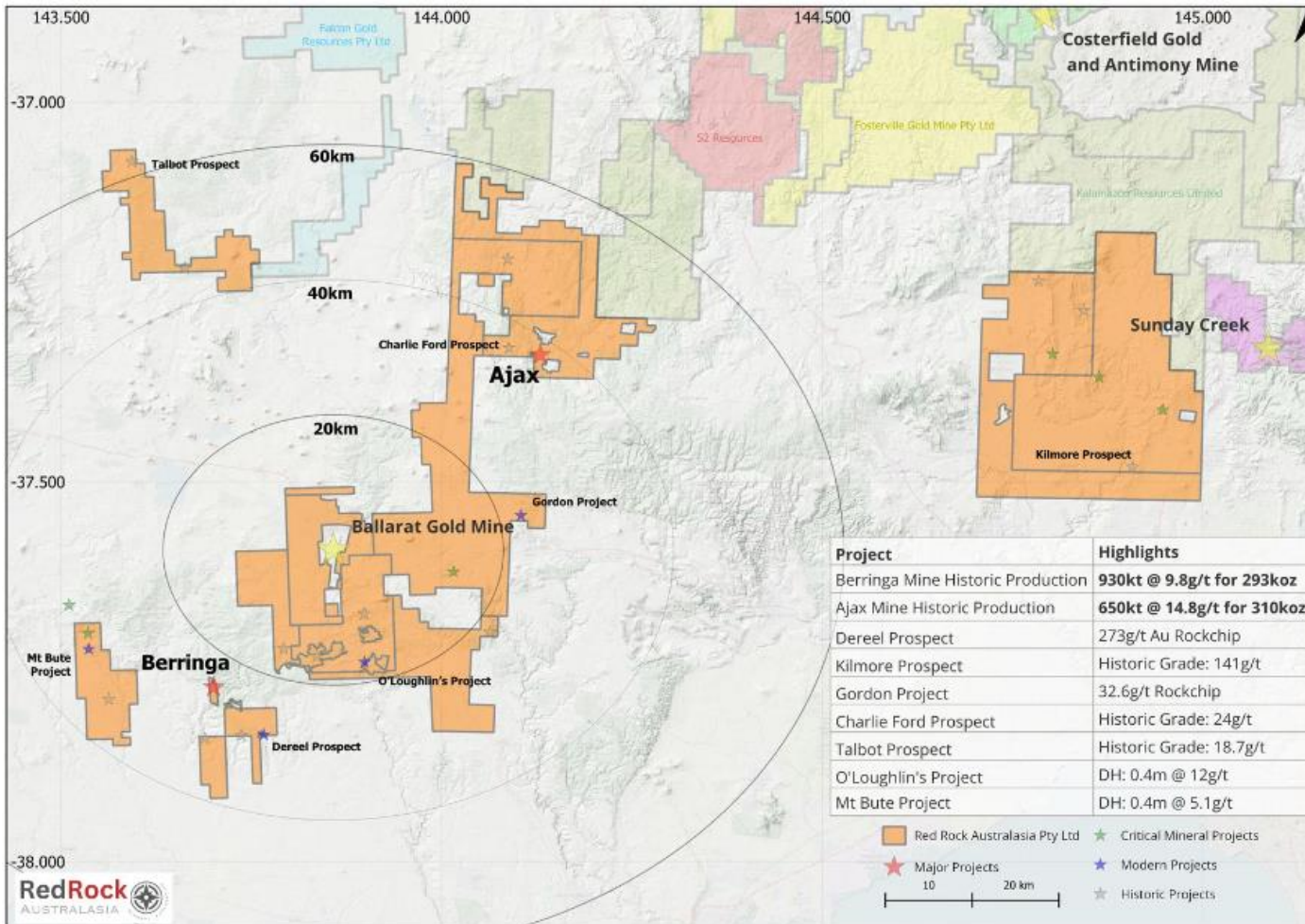


- 2023 study of Ajax line revealed indentification of three major targets
- RRAL release Exploration Target at Ajax
- Supported by drilling in the 1990s
 - 5m @ 7.9 g/t
- Little exploration since.
- Permits approved for drilling
- Drill sites ready to go



Regional Advanced Exploration Projects

Over 10
projects in the
pipeline to
explore



RRAL DDH at O'Loughlins: 0.4 m @ 11.94 g/t

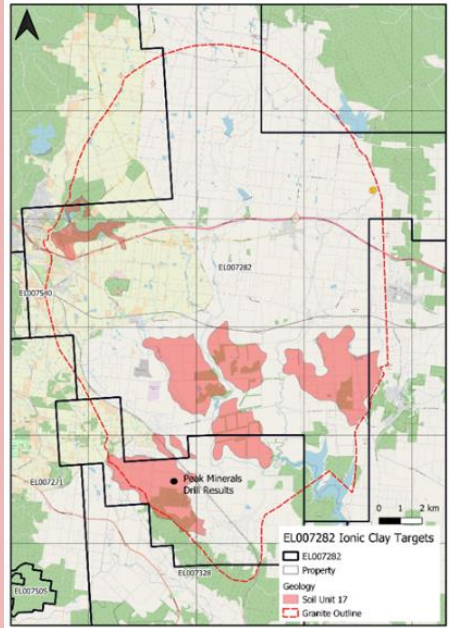
RRAL DDH at Mt Bute: 1.35 m @ 2.42 g/t

RRAL Rock chip at Dereel: 237g/t

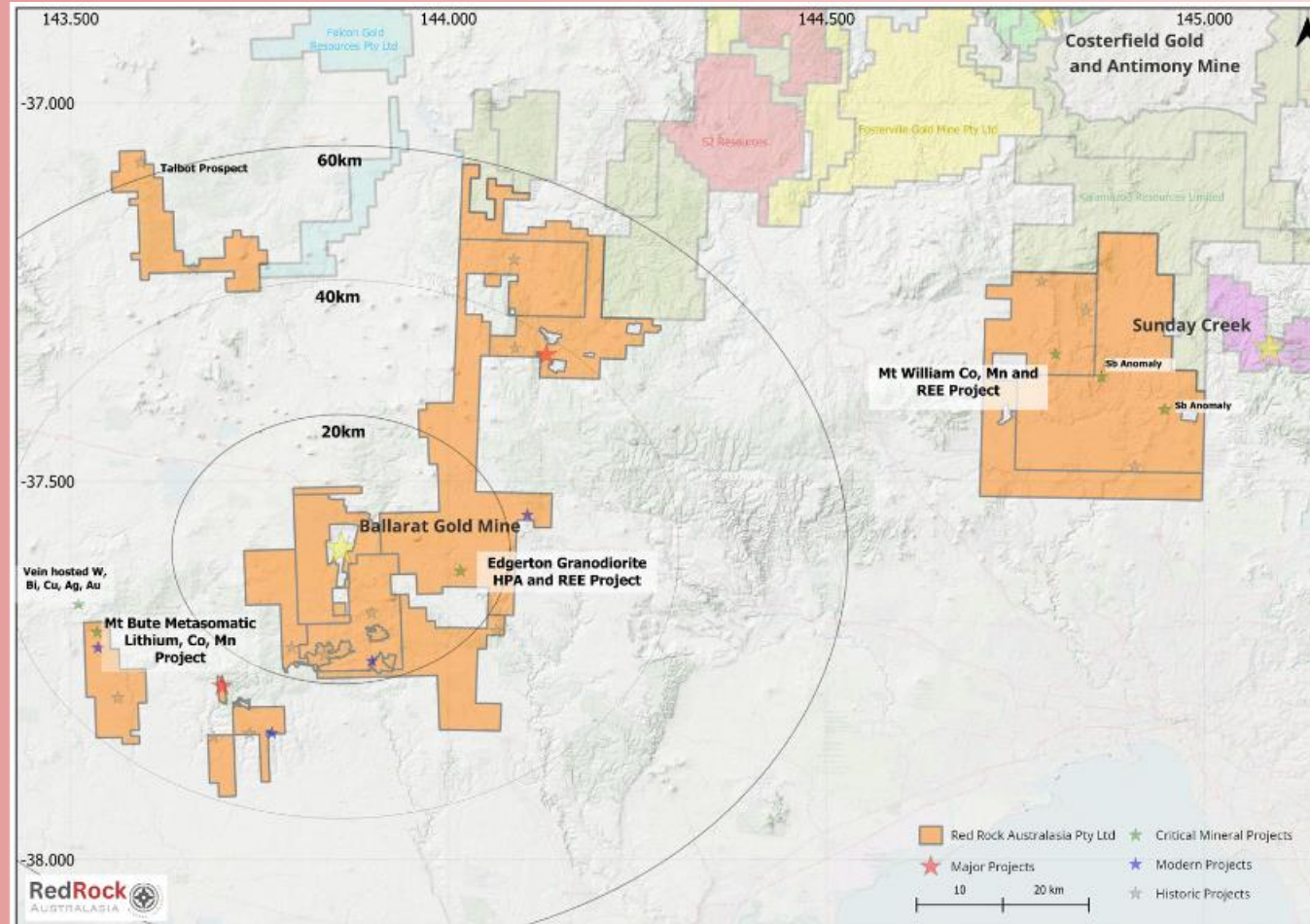
**Historic Production at Charlie Ford:
6,540 t @ 24.1g/t for 5,064 oz**

Critical Metals

Edgerton for HPA



- Decomposed Granodiorite weathered to 40m prospective iconic clay layer
- Peak Minerals (ASX:PUA) over 1000 ppm Total Rare Earth Oxides (TREO) samples of clay.



Mt William for REE

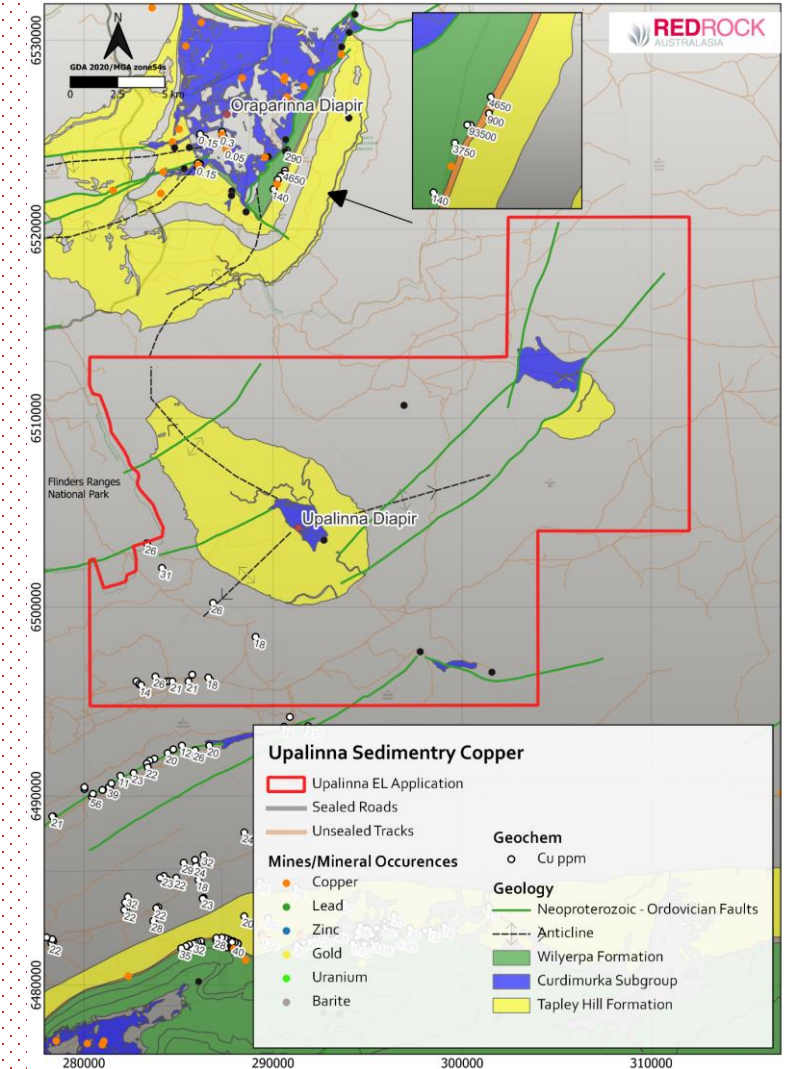
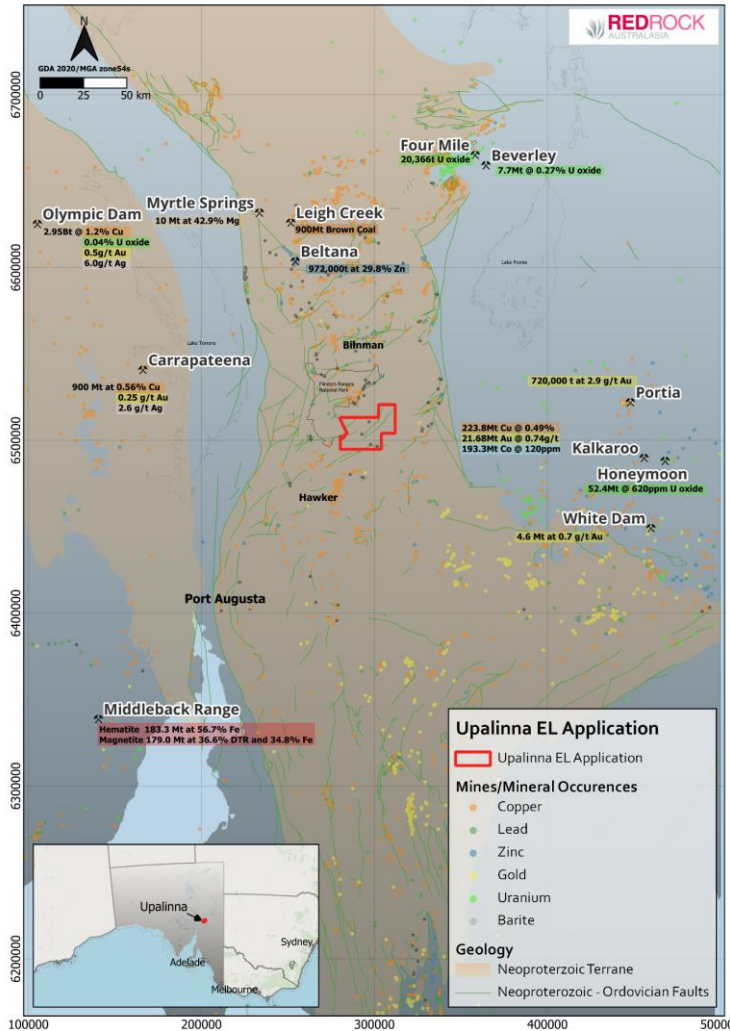


- Unique prospective Back Arc Basin
- Occurrences of cobalt (Co), Manganese (Mn) and Phosphorus (P).
- Potential enrichment in phosphate horizons.
- Target: 30m thick, 10kms strike, open at depth.

South Australia Tenement

EL6947

- Newest Tenement. Granted Nov 2023
- 550 sq. km prospective Flinders Ranges
- World Class mineralised belt
- RRAL broadens portfolio into copper, cobalt and other critical minerals outside Victoria
- New exploration concepts of remobilisation of Copper-Rich brines into sediments
 - Big Indian, Utah
- Additionally explore for Copper intrusives beneath cover sediments
 - Havieron style



Local Team



TARRANT MEEHAN
SENIOR EXPLORATION GEOLOGIST

Tarrant grew up in the former gold-mining town of Creswick, Victoria. He has geological experience spanning from the outback of Western Australia to leading the technical team in underground gold production in Victoria. Tarrant brings a unique blend of practical gold production experience with a strong problem-solving skillset. Tarrant is also heavily involved in the local community in which he lives



KIARA REDDINGIUS
ENVIRONMENT and SOCIAL GOVERNANCE ADVISOR

Kiara comes to the company with a background in both Environmental Science and Teaching: holding tertiary qualifications in both. Kiara is from a remote community in Australia, worked within the exploration industry, and taught at many levels; Kiara most recently became a Winter Olympian competing in bobsleigh at the 2022 Beijing Olympics, and is passionate about engaging health and wellbeing of community through sport.



JACK MCINERNEY
EXPLORATION GEOLOGIST

Jack graduated with Honors in Geology from Ballarat University. He has developed a strong understanding of gold mineralization and global models of ore geology. Jack has been working at Ballarat's underground gold mine: Living just south of Ballarat, Jack brings special benefit to the company as an active member of his rural community, using his local knowledge in effective management of field activities and project generation.



CLARK FOSTER
GEOLOGIST and IT MANAGER

Clark was born and raised in Ballarat and has been involved in Mining and Exploration for over 10 years. His work has carried him around the most remotes sites in Western Australia and through much of Victoria. Along with his field experience, Clark brings his qualifications in Information Technology. With his broad skill set Clark is instrumental in managing the Company's field activities and logistics. Outside work, Clark is proud to be part of the Ballarat community and appreciates that he has the opportunity to enjoy living in a regional town.

Executive Summary

More Information:
www.rral.net.au

| | |
|--|--|
| 2 Resource Definition Production pre-planning | Potential near term gold production assets Ajax exploration target: Grade of 6.4g/t to 18.7g/t and 250,000 to 1,400,000 tonnes Berringa exploration target: Grade of 5.8g/t to 14.2g/t and 919,000 to 12,790,000 tonnes |
| 6 Advanced Exploration | Within Close Proximity to active Ballarat Gold Mine Enclosing numerous Historical Workings and mines |
| 3 Critical Metals Projects | Potential critical metals projects with potential for significant discovery Riding the Critical Metals Wave |
| >10 projects in total providing a pipeline from near term production through to developing concepts | Projects overall with extensive land holding exploring for gold and critical metals <i>Unlocking the Future: Where Expertise meets Opportunity.</i> |